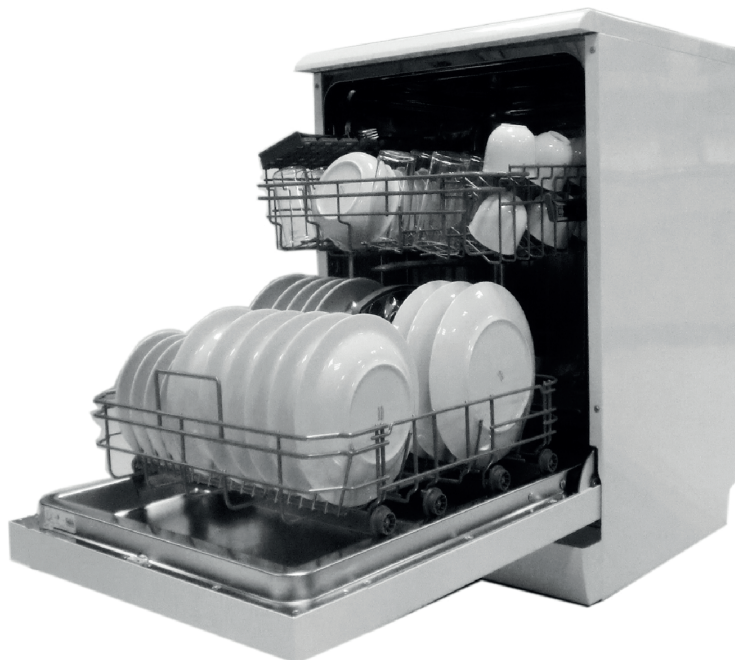


Operating Instructions



Daewoo Model NO. **DDWMJ1411W**

14 plate settings



Before using product, please read this manual carefully and keep it for the future reference.

Customer Helpline Number : **03330 144477**

For more information, Visit DAEWOO ELECTRONICS Website

www.daewooelectronics.co.uk

Contents




This appliance is intended for private domestic use only.

1) Safety Instructions	page 1
2) Quick operation guide	4
3) Operation Instruction	5
• Control Panel .	
• Dishwasher Features	
4) Before using the dishwasher...	7
A. Water softener	
B. Loading the salt into softener	
C. Fill the rinse aid dispenser	
D. Function of the detergent	
5) Loading the Dishwasher racks	12
• Attention before or after loading the Dishwasher Baskets	
• Upper Basket	
• Lower Basket	
• Cutlery Basket	
6) Starting a program	14
• Turning on the appliance	
• Change the program	
• At the end of the cycle	
7) Cleaning and care	15
• Filtering System	
• Caring for the Dishwasher	
8) Installation instruction	17
• Positioning the Appliance	
• Water Connection	
• About Power Connection	
• Start of dishwasher	
9) Troubleshooting Tips	19
• Before calling for service	
• Error codes	
• Technical information	

**Please note, following a policy of constant development and updating of the product, may make modifications without giving prior notice.

Safety instructions

 **To reduce the risk of fire, electric shock, or injury to persons when using your appliance, follow basic precautions, including the following:**

- This appliance can be used by children aged from 8 years and above and persons with reduced physical, sensory or mental capabilities or lack of experience and knowledge if they have been given supervision or instruction concerning use of the appliance in a safe way and understand the hazards involved. Children shall not play with the appliance. Cleaning and user maintenance shall not be made by children without supervision.
- If supply cord is damaged, it must be replaced by manufacturer, its service agent in order to avoid a hazard.
- For appliances with ventilation openings in the base, that a carpet must not obstruct the openings.
- The new hose-sets supplied with appliance are to be used and that old hose-set should not be reused.

Be sure to keep for safety!

Read these safety instructions thoroughly and carefully before using. Please keep this user guide on hand for future reference.



- Indicates the possibility of danger of death or serious injury.
- Indicates the possibility of risk of personal injury or material damage.

Other Signs



Do not remove or disassemble!



Be sure to unplug from outlet/mains!



NO. DO NOT...



Be sure to keep and follow!



Caution

1. If the supply cord becomes damaged, it must be replaced by the manufacturer or its service agent or a similarly qualified person in order to avoid a hazard.
2. This appliance is not intended for use by person (including children) with reduced physical, sensory or mental capabilities, or lack of experience and knowledge, unless they have been given supervision or instruction concerning use of the appliance by a person responsible for their safety.

Safety instructions

WARNING



Never let the power cord be crushed by the appliance itself or other (heavy) objects. Never bend power cord excessively.

- If the cord is damaged or peeled, it can be a cause of fire and electric shock.



Do not connect the appliance to the mains electricity supply by a multi-socket unit or an extension lead.

- These do not guarantee the required safety of appliance. It can be a cause of overheating and/or fire.



Never hold the power cord or plug with wet hands.

- There is a risk of electric shock.



Be sure to ground. Check if your wall outlet is grounded(earthed).

- There is a risk of electric shock hazards.



Never unplug by pulling only the power cord wire. Always grip the plug firmly.



Let the cord from the plug outlet be directed downwards.

- If it is directed up, the cord near the plug is bent and can be damaged, which can cause an electric shock or fire.



Do not install the appliance on a wet floor or in a place with excessive humidity and moisture.

- Electric insulation gets weakened, resulting in a risk of electric shock hazards.



Never let the power cord touch or pass over heating appliances.

- Power cord can be damaged, resulting in a risk of electric shock hazards.



Check if plug is loose from the wall outlet.

- Electric insulation gets weakened, resulting in a risk of electric shock hazards.



Do not let children hang on the doors.

- The appliance may be tipped over to hurt children. Always keep children well away from the appliance while it is operating.



Never repair or disassemble or amend the appliance on your own.

- There is a risk of personal injury or damage to the appliance. It is recommended that any service be carried out by a manufacturer or its service agent.



Never use flammable gas, benzene, thinners, gasoline, spray etc. near the appliance.

- There is a risk of fire, explosion and personal injury or damage.



Never insert fingers or hands into the bottom of the appliance especially into the bottom at the back.

- You can be hurt by sharp metal edges or can receive an electric shock.



When you find the power cord damaged or cut, call the service agent immediately.



Keep ventilation openings, in the appliance enclosure or in the built-in structure, clear of obstruction.



Do not fill the rinse aid reservoir with powder or liquid detergent.

- This will cause serious damage to the reservoir.



Do not use washing-up liquid or strong acid cleaning agent.

- Only use detergent and rinse aid formulated for domestic dishwashers.



The new hose-sets supplied with appliance are to be used and that old hose-set should not be reused.



This Knives and other utensils with sharp points must be loaded in the basket with their points down or placed in a horizontal position.



Cleaning and user maintenance shall not be made by children without supervision.



Children shall not play with the appliance.

Safety instructions



Inadvertently filling the salt reservoir with powder or liquid detergent will damage the water softener.
Make sure you have picked up correct packet of dishwasher salt before filling the salt reservoir.



Never cut the water inlet hose ,even it is too long.
There are electrical wires in the hose of Aqua-stop.



Do not inhale or ingest dishwasher detergent.
Dishwasher detergent contain irritant or corrosive ingredients which can cause burning in the nose, mouth and throat if swallowed or inhibit breathing. Consult a doctor immediately if detergent has been swallowed or inhaled.



The manufacturer cannot be held liable for damage resulting from incorrect or improper use or operation.



Do not use solvents in the dishwasher.
Danger and explosion



Be sure to unplug the dishwasher when it is not going to be used for a long time.



Always disconnect the dishwasher from electrical supply before doing a maintenance, cleaning or repair.



Please use dishwasher salt only.
The other salts may contain insoluble additives which can impair the functioning of the softener.



In an appliance with a cutlery basket (depending on model), cutlery is cleaned and dried more efficiently if placed in the basket with the handles downwards. However, to avoid the risk of injury, place knives and forks etc. with the handles upwards.



Check the plastic items whether they are marked dishwasher safe or equivalent.
Plastic items which cannot withstand being washed in hot water, such as disposal plastic containers, or plastic cutlery and crockery should not be cleaned in the dishwasher.
The high temperatures in the dishwasher may cause them to melt or lose shape.



Faulty components must only be replaced by original spare parts.
Only when these parts are fitted can the safety of the appliance can be guaranteed.



Unauthorised repairs could result in unforeseen dangers for the user, for which manufacturer cannot accept liability.
Repairs should be only undertaken by an approved service technician.

Disposal of the product



The meaning of the symbol on the product, its accessory or packaging indicates that this product shall not be treated as household waste.
Please, dispose of this equipment at your applicable collection point for the recycling of electrical & electronic equipment waste.



In the European Union and Other European countries there are separate collection systems for used electrical and electronic product.


By ensuring the correct disposal of this product, you will help prevent potential hazards to the environment and to human health, which could otherwise be caused by unsuitable waste handling of this product. The recycling of materials will help conserve natural resources. Please do not therefore dispose of your old electrical and electronic equipment with your household waste.

For more detailed information about recycling of this product, please contact your local city office, your household waste disposal service or the shop where you purchased the product.

Quick operation guide

For detailed operating method read the corresponding content on the instruction manual.

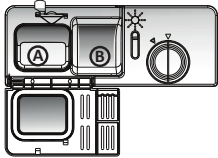
Switch on the appliance

Once all installation is done correctly, Switch on the power and press  button.

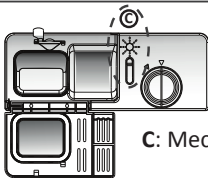


Fill the detergent dispenser

A: Main wash detergent
B: Pre-wash detergent



Check the rinse aid level



C: Mechanical indicator



Check the salt level

If there is a salt warning light on the control panel, refill the salt following the instruction on page 7.



Load & Select the programme

Scrape off any remaining food on the plate and load them correctly. Then, close the door and select the program. Once you press START button, it will be running after 10 seconds.

Switching off the appliance

The end signal alarm goes off for 8 times when the cycle is finished. Press the Power button to turn off the appliance.



Changing the program?!

If the cycle is running less than 2 minutes, press Pause button -> press Program button more than 3 seconds to cancel the running cycle-> Select the new program-> Press the start button again.

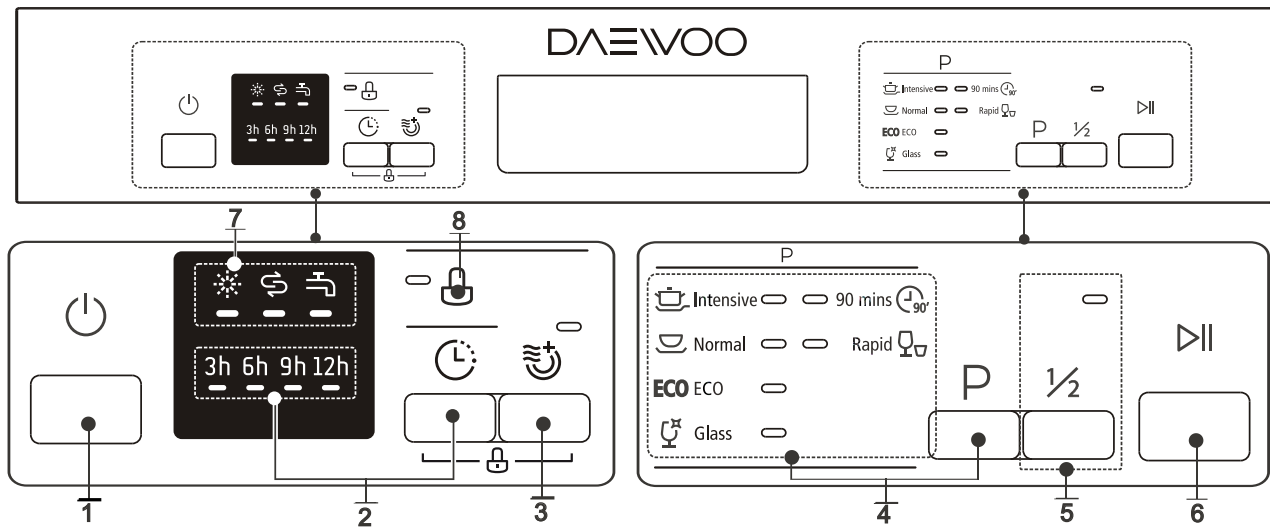
Caution

The programme should not be changed if it has been running more than 2 minutes. We do not recommend to change the cycle once Start button has been pressed.



Operation instruction

Control panel



- 1 **Power ON/OFF** Press the button to turn the dishwasher on or off.
- 2 **Time Delay** Press the button to set the delayed hours for washing. One press on the button delays the start by 3 hours up to 12 hours.
- 3 **Extra dry** Increased the temperature during the final rinse and extended drying phase. You cannot choose Extra dry function when Glass program is selected.

- 4 **Program P** Press the button to choose the programmes.

Program	Cycle	Detergent (Pre-wash/ Main wash)	Running Time (min)	Energy (Kwh)	Water (L)	
Intensive	Heavily soiled items include pots and pans	Prewash (50°C) Wash (60°C) Rinse Rinse (70°C) Drying	5 g/ 30g	170	1.6	18.5
Normal	Light to heavily soiled daily using items	Prewash (40°C) Wash (55°C) Rinse Rinse (65°C) Drying	5 g/ 30g	180	1.3	15
ECO ECO	Normally soiled daily using itmes with reduced energy and water consumption	Prewash Wash (45°C) Rinse (60°C) Drying	5 g/ 30g	190	0.93	11
Glass	Lightly soiled delicate items	Pre-wash Wash (40°C) Rinse Rinse (60°C) Drying	5 g/ 30g	130	0.9	14.5
90 mins	Lightly soiled items for less drying time	Wash (65°C) Rinse Rinse (65°C) Drying	35g	90	1.35	12.5
Rapid	Quick wash without drying	Wash (45°C) Rinse (50°C) Rinse (55°C)	25g	30	0.75	11

- 5 **Half load** You can only use it when you have only about or less than 4 place setting dishwave. Please note, it can not be selected with Glass cycle.

- 6 **Start/ Pause**

- 7 **Other indicators**

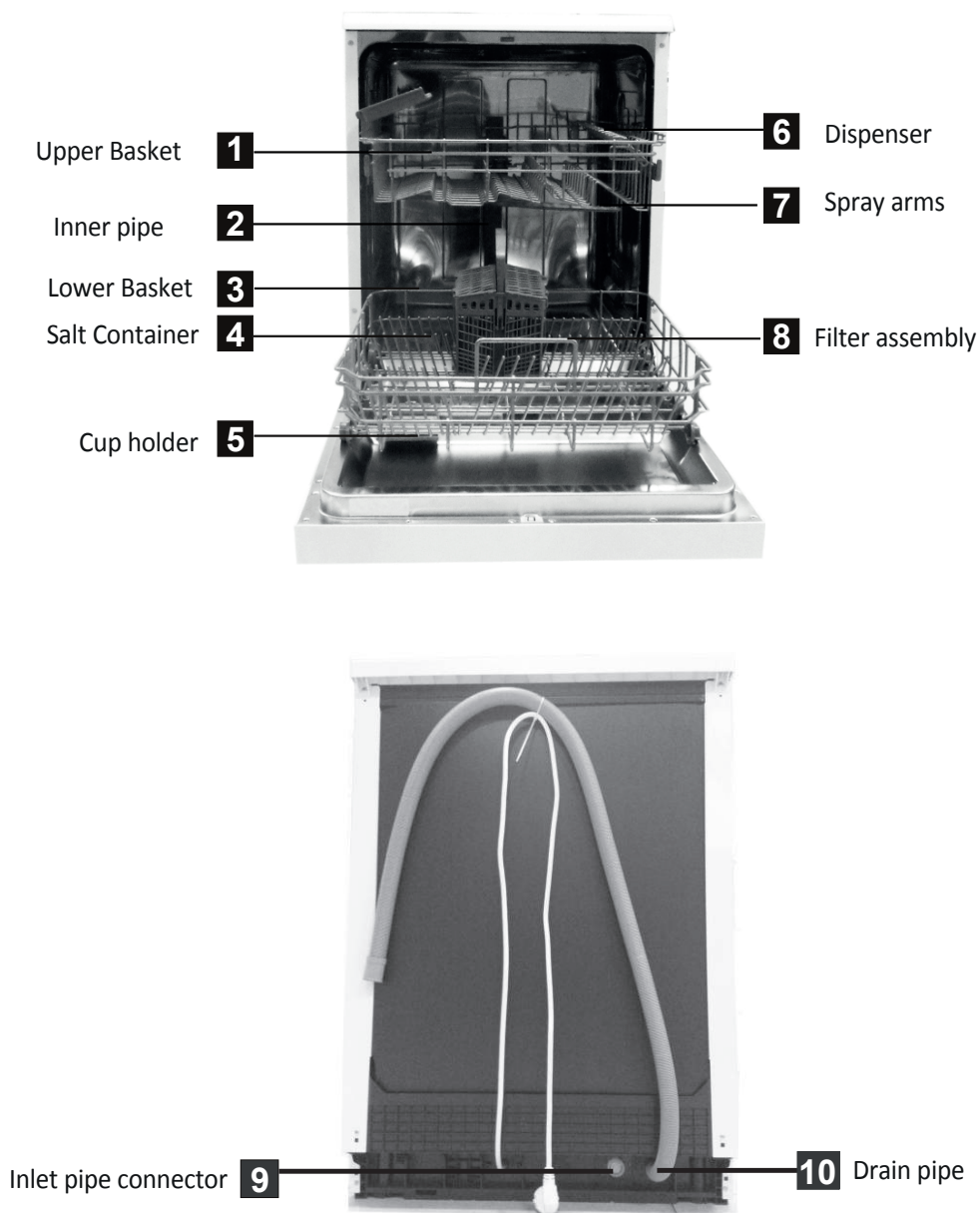
- Rinse aid refill indicator
- Salt refill indicator
- Water pressure indicator

- 8 **Child Lock**

Press Time delay and Extra dry button at the same time for more than 3 seconds, Child Lock light will be on.

Operation instruction

Dishwasher features



Before using the dishwasher..



Priority to check before using the appliance for the first time.

- A. Set the water softener
- B. Add 1.5Kg dishwasher salt and then fill in the water
- C. Fill the rinse aid dispenser
- D. Fill in detergent

A. Water softener

The water softener must be set manually, using the water hardness dial.

The water softener is designed to remove minerals and salts from the water, which could have a detrimental or adverse effect on the operation of the appliance. The higher the content of these minerals and salts, the harder your water is.

The softener should be adjusted according to the hardness of the water in your area. Your local Water Authority can advise you on the hardness of the water in your area.

• Adjusting salt consumption

The dishwasher is designed to allow for adjustment in the amount of salt consumed based on the hardness of the water used. This is intended to optimise the level of salt consumption.

To set the salt consumption, please proceed as below:

1. Switch on the appliance;
2. Press the Start/Pause button for more than 5 seconds to start the water softener set model within 60 seconds after the appliance was switched on;
3. Press the Start/Pause button to select the proper set according to your local environment, the sets will change in the following sequence: H1->H2->H3->H4->H5->H6;
It is recommended that adjustment should be made in accordance with the following table.
* Manufactory setting : H3 (EN 50242)
4. Press the Start/Pause button to end the set up model then, wait for 5 seconds to complete the settings.

WATER HARDNESS				Selector Position	Salt consumption (gram/cycle)
°dH	°fH	°Clarke	mmol/l		
0~5	0~9	0~6	0~0,94	H1	0
6~11	10~20	7~14	1,0~2,0	H2	9
12~17	21~30	15~21	2,1~3,0	H3	12
18~22	31~40	22~28	3,1~4,0	H4	20
23~34	41~60	29~42	4,1~6,0	H5	30
35~55	61~98	43~69	6,1~9,8	H6	60

*Contact your local water board for information on the hardness of your water supply.

** A Clark degree (°Clark) or English degrees (°e or e) is defined as one grain (64.8 mg) of CaCO₃ per Imperial gallon (4.55 litres) of water, equivalent to 14.254 ppm.

- 1 Clark (British degree) = 0.143 mmol/l

*** WATER SOFTENER

The hardness of the water varies from place to place. If hard water is used in the dishwasher, deposits may form on the dishes and utensils. The appliance is equipped with a special softener that uses a salt specifically designed to eliminate lime and minerals from the water.

Before using the dishwasher..

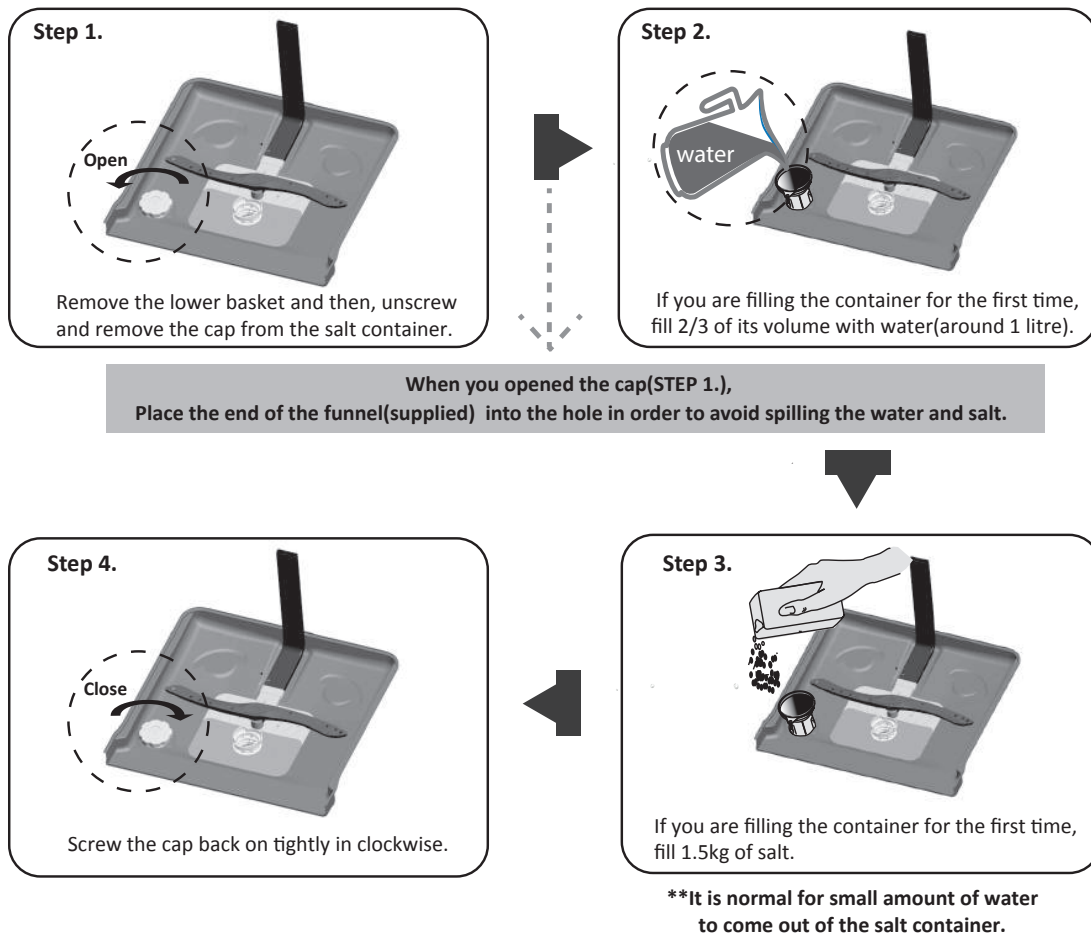
B. Loading the Salt into the softener

Always use the salt intended for use with dishwasher.


The salt container is located beneath the lower basket and should be filled as follows:

Attention

- Only use salt specifically designed for the use in dishwashers! Every other type of salt not specifically designed for the use in a dishwasher, especially table salt, will damage the water softener. In case of damages caused by the use of unsuitable salt the manufacturer does not give any warranty nor is liable for any damages caused.
- Only fill with salt just before starting one of the complete washing programs. This will prevent any grains of salt or salty water, which may have been spilled, remaining on the bottom of the machine for any period of time, which may cause corrosion.



***Please note,

- ✓ The salt container must be refilled when the salt warning light  on the control panel comes on.
- ✓ Although the salt container is filled enough, the indicator light may not switch off until the salt fully dissolves.
- ✓ If lots of salt is spilt inside of dishwasher, run a pre-wash program to reduce the spillage.

Before using the dishwasher..

C. Fill the rinse aid dispenser

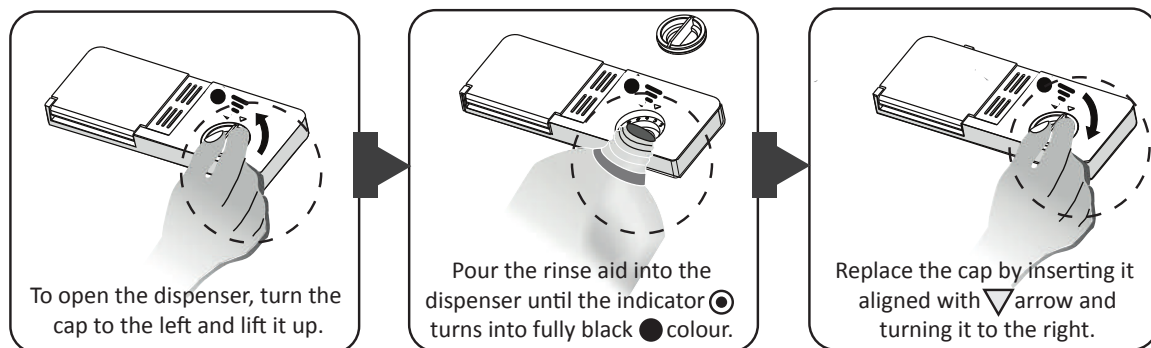
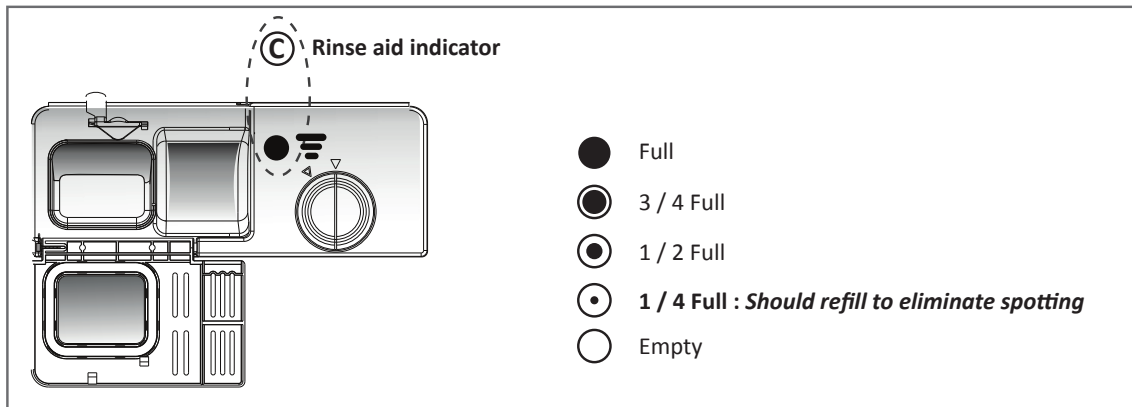
Rinse aid is automatically added during the last rinse, ensuring thorough rinsing, and spot and streak free drying.

! Attention

- Only use the **RINSE AID** specifically designed for the use in dishwashers! Never fill the rinse aid dispenser with any other substances (e.g. dishwasher cleaning agent, liquid detergent.). This would damage the appliance.

- When you refill the rinse aid dispenser

If there is no rinse aid warning light on the control panel, you can always estimate the amount from the colour of optical level indicator **C** located next to the cap. When the rinse aid container is full, the whole indicator will be dark. As the rinse aid diminishes, the size of the dark dot decreases. You should never let the rinse aid level fall 1/4 full.

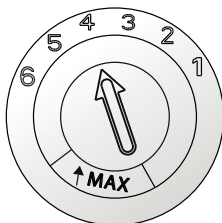


***Please note,

- ✓ When you pour the rinse aid, be careful not to overfill.
- ✓ Clean up any rinse aid spilled during filling with an absorbent cloth to avoid excess foaming during the next wash.

Before using the dishwasher..

- Adjusting rinse aid dispenser



The rinse aid dispenser has six or four settings. Always start with the dispenser set on "4". If spots and poor drying are a problem, increase the amount of rinse aid dispensed by removing the dispenser lid and rotating the dial to "5". If the dishes still are not drying properly or are show spots, adjust the dial to the next higher lever until your dishes are spot-free. The recommended setting is "4".(Factory value is "4".)

***Please note,

- ✓ Increase the dose if there are drops of water or lime spots on the dishes after washing.
- Reduce it if there are sticky whitish streaks on the dishes or a bluish film on glassware or knife blades.

D. Function of detergent

Detergents with its chemical ingredients are necessary to remove dirt, crush dirt and transport it out of the dishwasher. Most of the commercial quality detergents are suitable for this purpose.



Attention

- Dishwasher detergent is corrosive! take care to keep it out of reach of children.
- Only use the detergent specifically designed for the use in dishwashers! Keep your detergent fresh and dry. Do not put the powder detergent into the dispenser until you are ready to wash dishes.

- Concentrated detergent

Based on their chemical composition, detergents can be split in two basic types:

- conventional, alkaline detergents with caustic components
- low alkaline concentrated detergents with natural enzymes

The use of "normal" washing programs in conjunction with concentrated detergents reduces pollution and is good for your dishes; these wash programmes are specially matched to the dirt-dissolving properties of the enzymes of the concentrated detergent. For this reason "normal" wash programmes in which concentrated detergents are used can achieve the same results that can otherwise only be achieved using "intensive" programmes.

- Detergent tablets

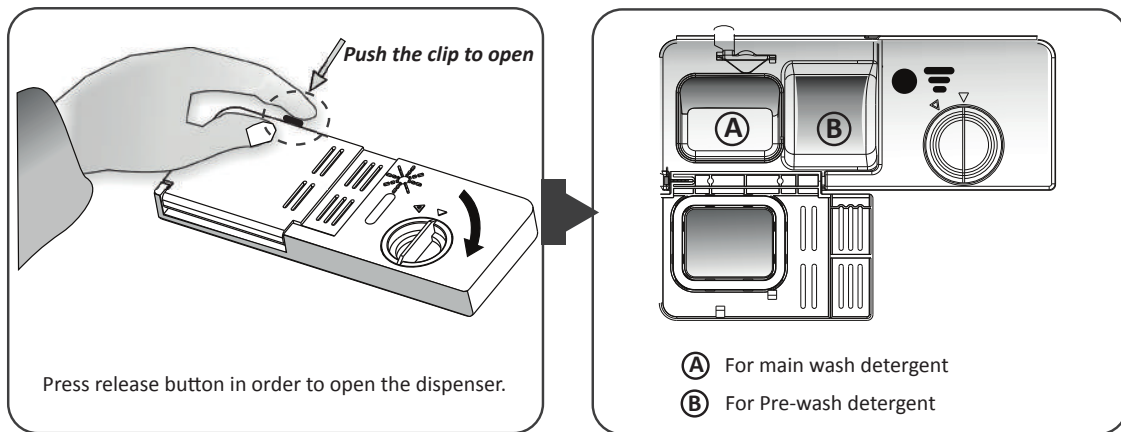
Detergent tablets of different brands dissolve at different speeds. For this reason some detergent tablets cannot dissolve and develop their full cleaning power during short programs. Therefore please use long programs when using detergent tablets, to ensure the complete removal of detergent residuals.

- Detergent dispenser

The dispenser must be refilled before the start of each wash cycle following the instructions provided in the wash cycle table . Your dishwasher uses less detergent and rinse aid than Conventional dishwasher. Generally, only one tablespoon of detergent is needed for a normal wash load. More heavily soiled items need more detergent. Always add the detergent just before starting the dishwasher, otherwise it could get damp and will not dissolve properly.

Before using the dishwasher..

- Fill detergent in dispenser



! Attention

- Dishwasher detergent is corrosive! take care to keep it out of reach of children.
- Only use the detergent specifically designed for the use in dishwashers! Keep your detergent fresh and dry. Do not put the powder detergent into the dispenser until you are ready to wash dishes.
- Always add the detergent just before starting each wash cycle.

Loading the dishwasher racks

For the best performance of the dishwasher, follow these loading guidelines. Features and appearance of racks and silver ware baskets may vary from your model.

Attention

Scrape off any large amounts of leftover food. It is not necessary to rinse the dishes under running water. Place objects in the dishwasher in the following order:

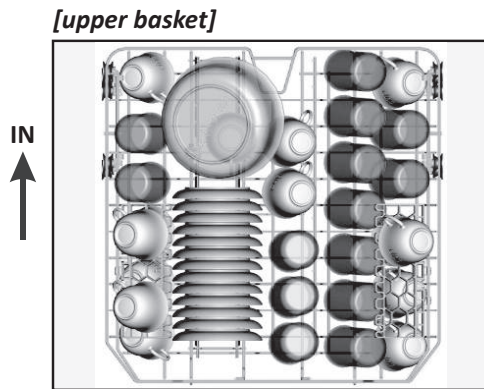
1. Items such as cups, glasses, pots/pans, etc. are stood upside down.
2. Curved items, or those with recesses, should be at a slant so that water can run off.
3. They are stacked securely and can not tip over.
4. They do not prevent the spray arms from rotating while washing takes place. Very small items should not be washed in the dishwasher as they could easily fall out of the racks.

* Removing the dishes

To prevent water dripping from the upper basket into the lower basket, we recommend that you empty the lower basket first and then, the upper basket.

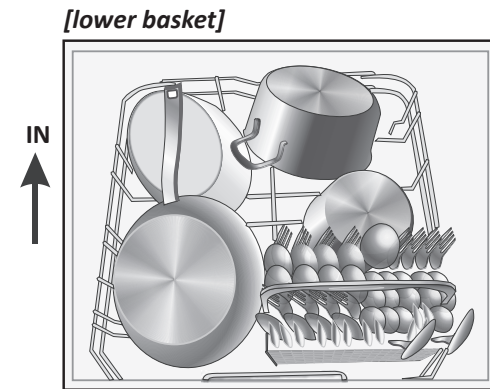
Loading the upper basket

The upper basket is designed to hold more delicate and lighter dishware such as glasses, coffee and tea cups and saucers, as well as plates, small bowls and shallow pans (as long as they are not too dirty). Position the dishes and cookware so that they will not get moved by the spray of water. **Always place glasses, mugs and bowls upside down.**



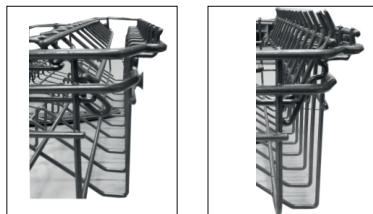
Loading the lower basket

We suggest that you place large items and the most difficult to clean items are to be placed into the lower basket: such as pots, pans, lids, serving dishes and bowls, as shown in the figure below. It is preferable to place serving dishes and lids on the side of the racks in order to avoid blocking the rotation of the top spray arm. **Also long items, serving cutlery, salad servers and big knives should be placed on the shelf so that they do not obstruct the rotation of the spray arms.**



Folding the shelves / spikes

For better stacking of pots and pans, the spikes can be folded down as show in the below.



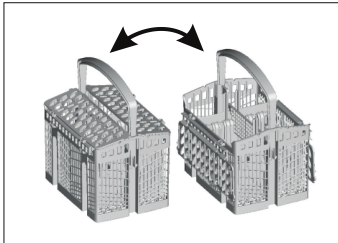
[folding back the cup shelves]



[folding back the spikes on lower basket]

Loading the dishwasher racks

Cutlery basket



Cutlery should be loaded in the cutlery rack individually into the appropriate slots and the long items should be placed on the shelf rather than the cutlery basket as this may cause bad performance due to rotation of the spray arms.

Check cutlery/ dishes before loading

Are not suitable

- Plastic items that are not heat resistant
- Older cutlery with glued parts that is not temperature resistant
- Bonded cutlery items or dishes
- Pewer or cooper items Lead crystal glass
- Steel items subject to rusting
- Wooden platters
- Items made from synthetic fibres

Are of limited suitability

- Some types of glasses can become dull after a large number of washes
- Silver and aluminium parts have a tendency to discolour during washing
- Glazed patterns may fade if machine washed frequently

***Please note,


- ✓ Do not try and wash items soiled with cigarette ash, candle wax, lacquer or paint. If you buy new dishes please make sure that they are suitable for dishwashers.
- ✓ Please do not overload your dishwasher. There is only space for 14 standard dishes.
- ✓ Do not use dishes that are not suitable for dishwashers. You should check the suitability of dishes/cutlery before loading them as manufacturer do not cover of the damage of dishes/cutlery.

- Dishes and cutlery must not impede the rotation of the spray arms.
Load hollow items such as cups, glasses, pans etc. with the opening downwards so that water cannot collect in the container or a deep base.
- Dishes and items of cutlery must not lie inside one another, or cover each other
 - To avoid damage to glasses, they must not touch.
 - Load large items which are most difficult to clean into the lower rack.
 - The upper rack is designed to hold more delicate and lighter dishware such as glasses, coffee and tea mugs.
- Long bladed knives stored in an upright position are a potential hazard!
Long and/or sharp items of cutlery such as carving knives must be positioned horizontally in the upper basket.


Starting the programmes

Turning on the appliance

• Starting the cycle

1. Draw out the lower and upper basket, load the dishes and push them back.
It is recommended to load the lower basket first, then the upper one (see the section entitled "Loading the dishwasher racks")
2. Pour in the detergent or add the dishwasher tablet on the dispenser.
3. Insert the plug the socket. The power supply is 220-240V~, 50 Hz, the specification of the socket is 10A 250VAC.
Make sure that the water supply is turned on to proper pressure.
4. Close the door and press the Power button , to switch on the machine.
5. Press the **P** (program) button, the wash program will be changed as follows:



ECO -> Glass -> 90 Min -> Rapid -> Intensive -> Normal -> ECO

If a wash program is selected, the response light will be on. Press the Start  button, the dishwasher begins to start.

*** When you press the START button to pause during the cycle, the running indicator will stop blinking and the dishwasher will beep every minute unless you press the START button to re-start again.**

• Change the program

Premise :


1. a cycle that is underway can only be modified if it has only been running for less than 2 minutes. Otherwise, the detergent may have already been released, and the appliance may have already drained the wash water.
If this is the case, the detergent dispenser must be refilled.
2. Then,
press  (pause) button -> press **P** (program) button more than 3 seconds to cancel the running cycle -> Select the new program -> Press  start button again.

***The programme should not be changed if it has been running more than 2 minutes.**

We do not recommend to change the cycle once Start button has been pressed.

• At the End of the wash cycle

When the working cycle has finished, the buzzer of dishwasher will beep shortly, then stop. In the digital display appears "0", only in this case the programme has ended.

1. Switch off the dishwasher by pressing  POWER button.
2. Unloading the dishes and cutlery. (please see the below attention before unloading)
It is normal that the dishwasher is wet inside. Empty the lower basket first and then upper one. This will avoid water dripping from the upper basket onto the dishes in the lower one.
3. Close the door.



Attention_ before unloading!!

- Open the door carefully. Hot steam may escape when the door is opened.
- Hot dishes are sensitive to knocks. The dishes should be allowed to cool down around 15 minutes before removing from the appliance.
- Open the dishwasher's door, leave it and wait a few minutes before removing dishes. In this way they will be cooler and the drying will be improved.
- Finally unloading the dishwasher

Cleaning and care

Cleaning the filter

• Filtering System

For your convenience, we have placed the drain pump and filtering system within easy reach inside the tub. There are three components of the filtering system.

1. Main filter

Food and soil particles trapped in this filter are pulverized by a special jet on the lower spray arm and washed down to drain.

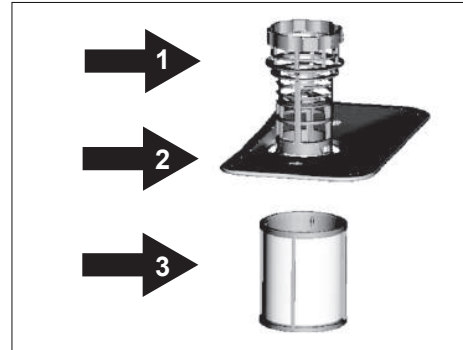
2. Coarse filter

Larger items, such as pieces of bone or glass, that could clog the drain are trapped in the coarse filter.

To remove an items caught in this filter, gently squeeze the tap on the top of this filter and lift it out.

3. Fine filter

This filter holds soil and food residues in the sump area and prevents it from being redeposited on the dishes during wash cycle.



! Attention!

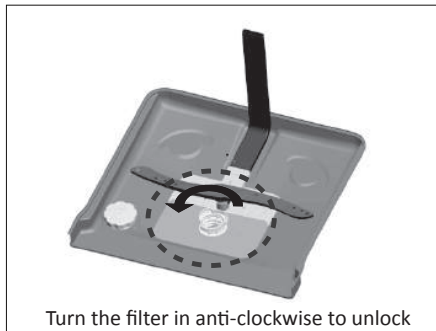
- Do not put the fine filter upside down.

• Filtering assembly

For the best performance and results, the filter assembly must be cleaned. The filter efficiently removes food parties from the wash water, allowing it to be recirculated during the cycle. For this reason, it is a good idea to remove the larger food particles trapped in the filter after each cycle by rinsing the semicircular filter and cup under running water.

To remove the filter assembly, turn it in anti-clockwise and lift the filter assembly up. Ther entire filter assembly should be cleaned regularly.

To clean the coarse filter and the fine filter, use a cleaning brush. Then, reinsert the entire assembly in the dishwasher, positioning in its seat, pressing downward, turning it clockwise direction.



! Attention!

- Never run the dishwasher without the filters in place.
- When cleaning the filters, do not damage them. It may not perform as intended and poor results or damage the internal parts may be encountered.

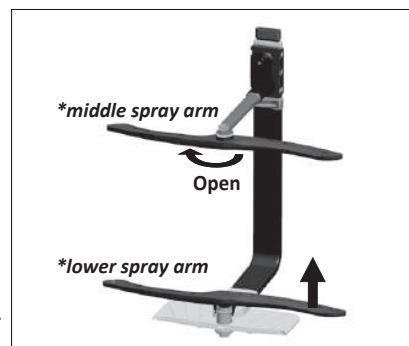
Cleaning and care

Cleaning the spray arms

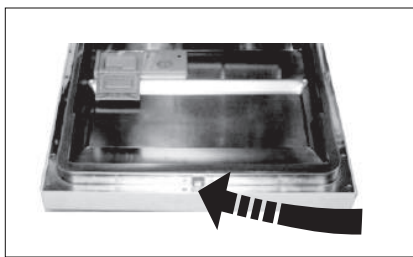
It is necessary to clean the spray arms regularly for hard water chemicals may clog the spray arm jets and bearings.

To remove the middle spray arm, hold the nut, rotate the arm clockwise to remove it.

To remove the lower spray arm, pull out the spray arm upward. Wash the arms in soapy and warm water and use a soft brush to clean the jets. Replace them after rinsing them thoroughly.



Cleaning the door



To clean the edge around the door, you should use only a soft warm, damp cloth. To avoid penetration of water into the door lock and electrical components, do not use a spray cleaner of any kind.

Also, never use abrasive cleaners or scouring pads on the outer surfaces because they will scratch the finish. Some paper towels can also scratch or leave marks on the surface.

! Attention!

- Never use spray cleaner to clean the door panel for it could damage the door lock and electrical components. It is not advised to use the abrasive agent or some paper towel because of the risk of scratching or leaving spots on the stainless steel surface.

Caring for the dishwasher

To clean the control panel use a lightly damp cloth then dry thoroughly. To clean the exterior use a good appliance polish wax. Never use sharp objects, scouring pads or harsh cleaners on any parts of the dishwasher.

- **After every wash**
After every wash, turn off the water supply to the appliance and leave the door slightly open so that moisture and odours not trapped inside.
- **Remove the plug**
Before cleaning or performing maintenance, always remove the plug from the socket.
- **No solvents or abrasive cleaning**
To clean the exterior and rubber parts of the dishwasher, do not use solvents or abrasive cleaning products. Use a cloth with warm soapy water only.
To remove spots or stains from the surface of the interior, use a cloth dampened with water an a little white vinegar, or a cleaning product made specifically for dishwashers.
- **When you go on holiday**
When you go on holiday, it is recommend that you run a wash cycle with the dishwasher empty and then remove the plug from the socket, turn off the water supply and leave the door slightly open. This will help the door seals to last longer and prevent odours from forming within the appliance.
- **Moving the appliance**
If the appliance must be moved, try to keep it in the vertical position. If absolutely necessary, it can be positioned on its back.
- **Seals**
One of the factors that cause odours to form in the dishwasher is food that remains trapped in the seals. Periodic cleaning with a damp sponge will prevent this from occurring.

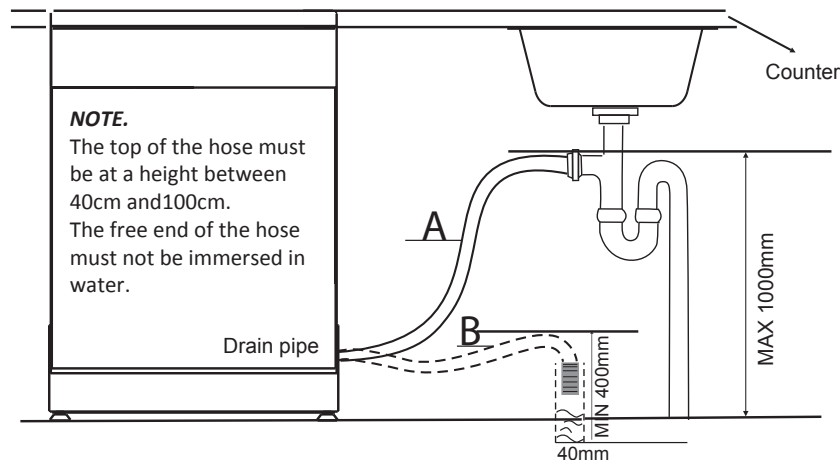
Installation guide

• Connection of drain hose

For connecting the hose, you could choose either way A or B.

Insert the drain hose into a drain pipe with a minimum diameter of 40mm, or let it run into the sink, making sure to avoid bending or crimping it. The top of the hose must be at a height between 400mm and 1000mm.

The free end of the hose must not be immersed in water to avoid the back flow of it.



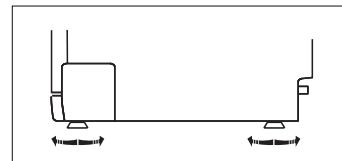
• Position the appliance

Position the appliance in the desired location. The back should rest against the wall behind it, and the sides, along the adjacent cabinets or walls. The dishwasher is equipped with water supply and drain hoses that can be positioned either to the right or the left sides to facilitate proper installation.

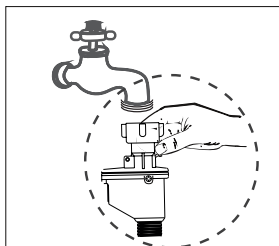
Levelling the appliance

Once the appliance is positioned for levelling, the height of the dishwasher may be altered via adjustment of the screwing level of the feet.

In any case, the appliance should not be inclined more than 2°.



• Water supply and cold water connection



Connect the cold water supply hose to a threaded 3/4(inch) connector and make sure that it is fastened tightly in place.

If the water pipes are new or have not been used for an extended period of time, let the water run to make sure that the water is clear.

This precaution is needed to avoid the risk of the water inlet to be blocked and damage the appliance.

Provided water supply hose has Aqua-stop system. Ensure that water supply hose's Aqua-stop pipe is connected to the water tap also!

! Attention!

- For water connection, ensure you connect to COLD water supply!
- Water pressure must be between 0.04MPa - 1MPa.
- Do not use used hose. This appliance must be connected with provided hose-sets.

Installation guide

- About electricity connecting



WARNING!

Disconnect electrical power before installing dishwasher. Failure to do so could result in death or electrical shock.

Electrical requirements

- an 220-240V , 50 Hz fuse or a circuit breaker
- an individual branch circuit serving your dishwasher
- **DO NOT USE AN EXTENSION CORD OR AN ADAPTER PLUG WITH THIS APPLIANCE.**
- **DO NOT, UNDER ANY CIRCUMSTANCES, CUT OR REMOVE THE THIRD GROUNDING PRONG FROM THE POWER CORD.**

- How to drain excess water from hoses

If the sink is 1000 higher from the floor, the excess water in hoses cannot be drained directly into the sink. It will be necessary to drain excess water from hoses into a bowl or suitable container that is held outside and lower than the sink.

- Water outlet

Connect the water drain hose. The drain hose must be correctly fitted to avoid water leaks. Ensure that the water drain hose is not kinked or squashed.

- Extension hose

If you need a drain hose extension, make sure to use a similar drain hose. It must be no longer than 4 metres; otherwise the cleaning effect of the dishwasher could be reduced.

- Syphon connection

The waste connection must be at a height between 40 cm (minimum) and than 100 cm (maximum) from the bottom of the dishwasher. The water drain hose should be fixed by a hose clip.

- Aqua-stop


The Aqua-stop system is a safety valve system, preventing water leaks. If the water inlet hose starts to leak anytime, the sfe valve cuts off the unning water. If the water inlet hose or the safety valve is damaged, remove and replace it. Do not enlarge or shorten the inlet hose.

Troubleshooting

The manufacturer, following a policy of constant development and updating of the product, may make modification without giving prior notice.

- **Before calling for service**

Review the charts on the following pages may save you from calling for service.

	Problem	Possible Causes	What to Do
 Technical problems	Dishwasher doesn't start	Fuse blown, or the circuit breaker acted	Replace fuse or reset circuit breaker. Remove any other appliances sharing the same circuit with the dishwasher
		Power supply is not turned on	Make sure the dishwasher is turned on and the door is closed securely. Make sure the power cord is properly plugged into the wall socket.
		Water pressure is low	Check that the water supply is connected properly and the water is turned on.
		Door of dishwasher not properly closed.	Make sure to close the door properly and latch it.
	water not pumped from dishwasher	Kink in drain hose	Check drain hose.
		Filter clogged	Check the coarse filter (see section titled "Cleaning The Filter ")
Kitchen sink clogged		Check the kitchen sink to make sure it is draining well. If the problem is the kitchen sink not draining, you may need a plumber rather than a serviceman for dishwashers.	
General problems	Suds in the tub	Improper detergent	Use only the special dishwasher detergent to avoid suds. If this occurs, open the dishwasher and let suds evaporate. Add 1 gallon of cold water to the tub. Close and latch the dishwasher, then select any cycle. Dishwasher will drain out the water at the first step. Open the door after draining is stop and check if the suds is disappeared. Repeat if necessary.
		Spilled rinse-aid	Always wipe up rinse-aid spills immediately.
	Stained tub interior	Detergent with colourant was used	Make sure that the detergent is the one without colourant.
	White film on inside surface	Hard water minerals	To clean the interior, use a damp sponge with dishwasher detergent and wear rubber gloves. Never use any other cleaner than dishwasher detergent for the risk of foaming or suds.
	There are rust stains on cutlery	A program was not run after dishwasher salt was added. Traces of salt have gotten into the wash cycle.	Always run the quick wash program . without any crockery in the dishwasher and without selecting the Turbo function (if present), after adding dishwasher salt.
Noise	Knocking noise in the wash cabinet	A spray arm is knocking against an item in a basket	Interrupt the program, and rearrange the items which are obstructing the spray arm.
	Rattling noise in the wash cabinet	Items of crockery are loose in the wash cabinet	Interrupt the program, and rearrange the items of crockery.
	Knocking noise in the water pipes	This may be caused by on-site installation or the cross-section of the piping.	This has no influence on the dishwasher function. if in doubt, contact a suitably qualified plumber.

Troubleshooting



	Problem	Possible Causes	What to Do
Unsatisfactory washing result	The dishes are not clean	The dishes were not loaded correctly.	See notes in "Loading the Dishwasher Baskets".
		The program was not powerful enough.	Select a more intensive program. See "Wash Cycle Table".
		Not enough detergent was dispensed.	Use more detergent, or change your detergent.
		Items are blocking the path of spray arms.	Rearrange the items so that the spray can rotate freely.
		The filter combination in the base of wash cabinet is not clean or is not correctly fitted. This may cause the spray arm jets to get blocked.	Clean and/or fit the filter combination correctly. Clean the spray arm jets. See "Cleaning the Spray Arms".
	Cloudiness on glassware	Combination of soft water and too much detergent.	Use less detergent if you have soft water and select a shortest cycle to wash the glassware and to get them clean.
	Black or gray marks on dishes	Aluminum utensils have rubbed against dishes.	Use a mild abrasive cleaner to eliminate those marks.
	Detergent left in dispenser cups	Dishes block detergent cups.	Re-loading the dishes properly.
Unsatisfactory drying result	The dishes are not drying	Improper loading	Load the dishwasher as suggested in the directions.
		Too little rinse-aid	Increase the amount of rinse-aid/refill the rinse-aid dispenser.
		Dishes are removed too soon	Do not empty your dishwasher immediately after washing. Open the door slightly so that the steam can escape. Begin unloading the dishwasher only once the dishes are barely warm to the touch. Empty the low basket first. This prevents water from dropping off dishes in the upper basket.
		Wrong program has been selected	In short program the washing temperature is lower. This also lowers cleaning performance. Choose a program with a long washing time.
	Use of cutlery with a low-quality coating	Water drainage is more difficult with these items. Cutlery or dishes of this type are not suitable for washing in the dishwasher.	

• Error codes

In an error occurs an error code may be displayed to inform you:

Codes	Meanings	Possible Causes
The Rapid light flicker fleetly	Longer inlet time.	Water tap is not opened, or water intake is restricted, or water pressure is too low.
The Rapid and 90Min light flicker fleetly	Not reaching required temperature.	Malfunction of heating element .
The Glass light flicker fleetly	Overflow.	Some element of dishwasher leaks .

Repairs_after sales service

NOTE,

Your dishwasher comes with free 2 year warranty if registered within first 30 days from the date of purchase.

Otherwise only a year warranty provided.

If it is not working correctly, consult the trouble shooting guide within this instruction manual. If a fault occurs which you cannot resolve through following the advice and information contained within this user guide, the next step is to contact our service centre.

When you contact service centre you will need to give the following details;

- Your name , address and post code
- Your telephone number
- Clear and concise details of fault
- The purchase date as found on your receipt.
- The model and serial number of the fridge freezer. so that you always have these numbers at hand.
- we recommend you make a note of them here.

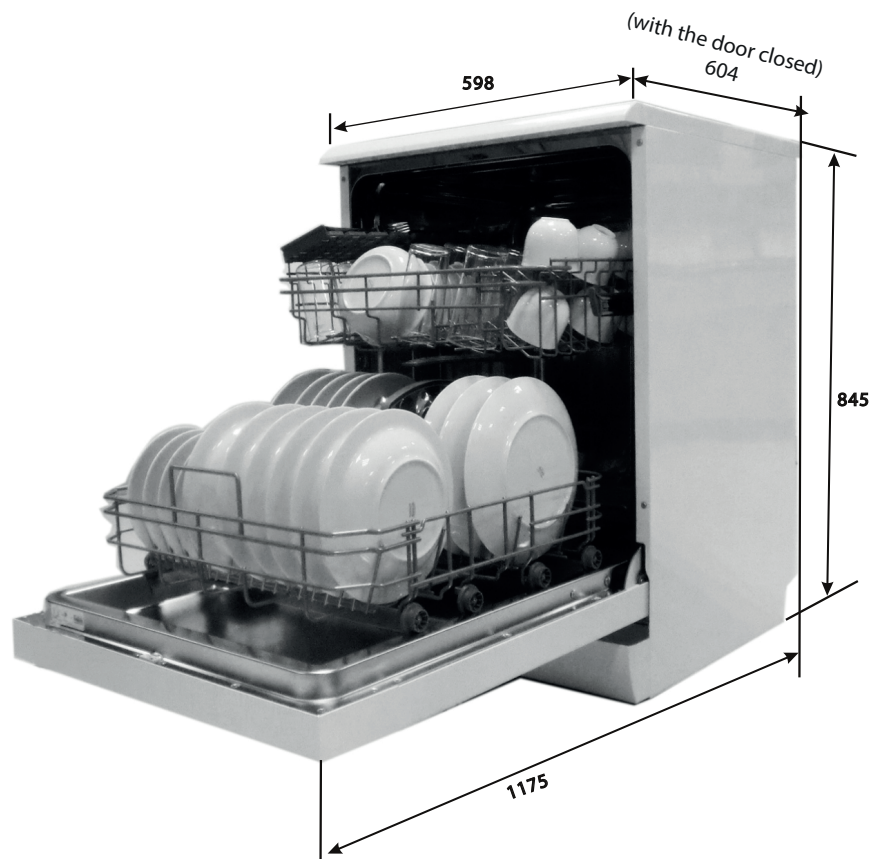
- Model number : DDWMJ1411W _____
- Serial number : _____

*Note : If you call out an engineer to a fault or to repair a fault caused by incorrect use or installation, a charge could be made even if the dishwasher is under guarantee.

**Model number and serial numbers are on the label on the door.

Appendix Product information

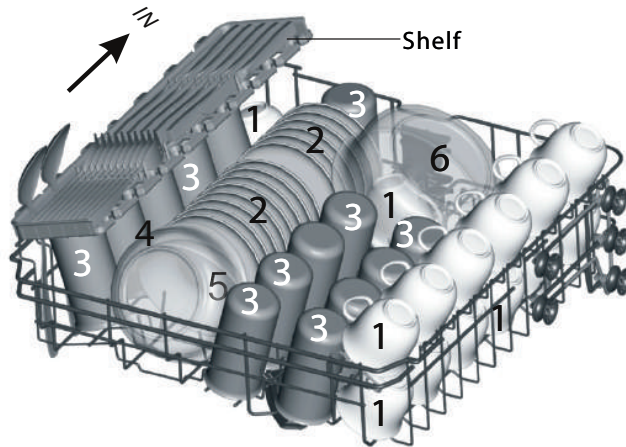
- Specifications












Height :	845mm
Width :	598mm
Depth :	604mm(with the door closed)
Water pressure:	0.04-1.0MPa
Power supply:	see rating label
Capacity:	14 place settings
Net weight / Gross weight	41.5/47kg
Voltage	230V
Frequency	50Hz

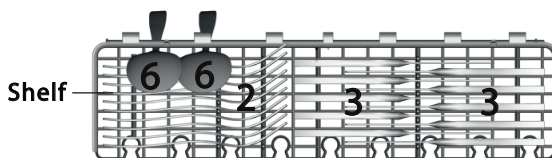
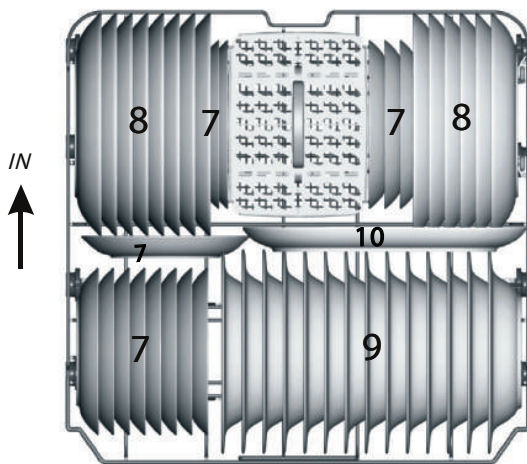
Appendix for comparability test in accordance with European standard EN50242:

• Upper basket



-
- Cups
-  1
2
-
- Saucers
-  3
-
- Glasses
-  4
-
- Small serving bowl
-  5
-
- Medium serving bowl
-  6
-
- Large serving bowl
-  7
-
- Dessert dishes
-  8
-
- Dinner plates
-  9
-
- Soup plates
-  10
-
- Oval platter

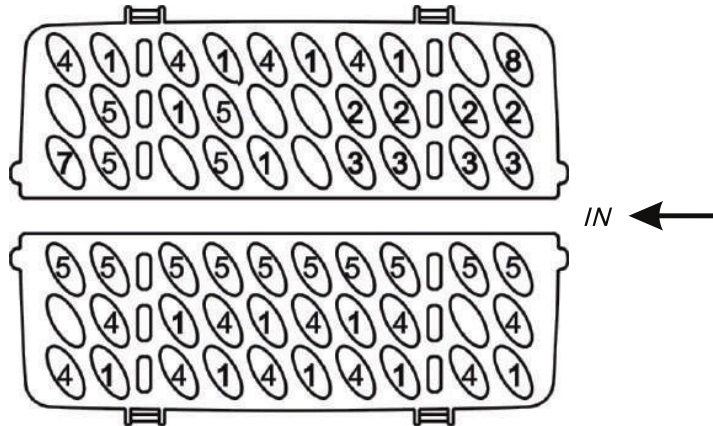
• Lower basket











Note:
Please place the light flat light flat wares on wares on the shelf. the shelf.
The The total weighttotal weight is less is less than 1.5kg. than 1.5kg.

Appendix for comparability test in accordance with European standard EN50242:

- Cutlery basket



1 Soup spoons		5 Dessert spoons	
2 Forks		6 Serving spoons	
3 Knives		7 Serving forks	
4 Teaspoons		8 Gravy ladles	

Information for comparability tests in accordance with EN 50242

Capacity: 14 place settings
 Position of the upper basket to lower position
 Programme: ECO
 Rinse setting: 6 Rinse aid setting
 Softener setting: H3

Appendix Product fiche & Energy label

- Data of household dishwasher according to EU Directive 1059/2010:

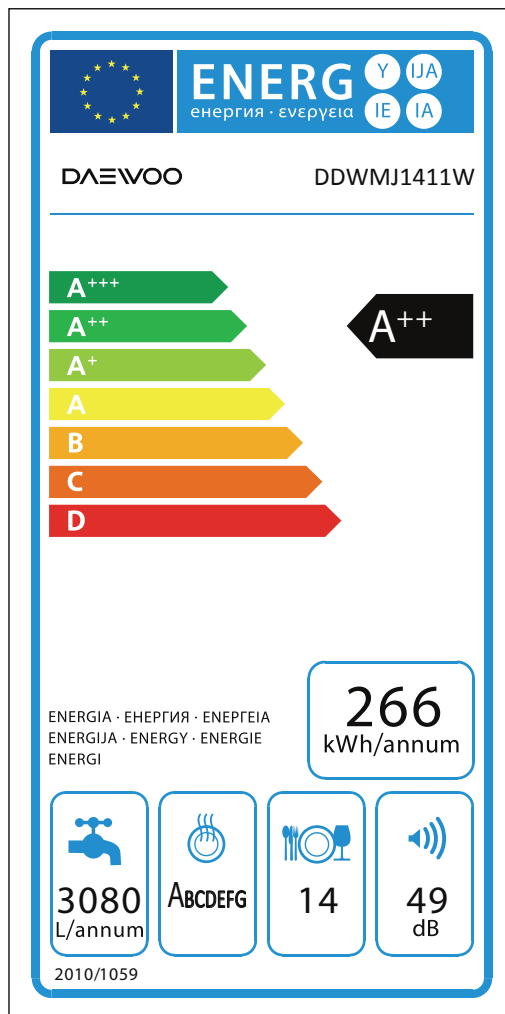
Manufacturer	DAEWOO
Type/ Description	DDWMJ1411W
Standard place settings	14
Energy efficiency class ①	A++
Annual energy consumption ②	266 kWh
Energy consumption of the standard cleaning cycle	0.93 kWh
Power consumption of off-mode	0.45 W
Power consumption of left-on mode	0.49 W
Annual water consumption ③	3080 litre
Drying efficiency class ④	A
Standard cleaning cycle ⑤	ECO 45 °C
Program duration of the standard cleaning cycle	190 min
Noise level	49dB(A) re 1 pW
Mounting	Free standing
Could be build-in	Yes
Height	84.5 cm
Width	59.8 cm
Depth (with connectors)	60.4 cm
Power consumption	1930 W
Rated voltage /frequency	230 V/50 Hz
Water pressure (flow pressure)	0.4-10 bar = 0.04-1 Mpa

NOTE :

- ①** A+++ (highest efficiency) to D (lowest efficiency)
- ②** Energy consumption “ 266 ” kWh per year, based on 280 standard cleaning cycles using cold water fill and the consumption of the low power modes. Actual energy consumption will depend on how the appliance is used.
- ③** Water consumption “ 3080 ” litre per year, based on 280 standard cleaning cycles. Actual water consumption will depend on how the appliance is used.
- ④** A (highest efficiency) to G (lowest efficiency)
- ⑤** This program is suitable for cleaning soiled normally soiled tableware and that it is the most efficient programme in terms of its combined energy and water consumption for that type of tableware.

Appendix Product fiche & Energy label

- Data of household dishwasher according to EU Directive 1059/2010:



The device meets the European standards and the directives in the current version at delivery (If the version number is not in conformity with the latest standards, please refer to the latest version number. :

- LVD 2014/35/EU
- EMC 2014/30/EU
- ERP 2009/125/EC

The above values have been measured in accordance with standards under specified operating conditions. Results may vary greatly according to quantity and pollution of the dishes, water hardness, amount of detergent, etc. The manual is based on the European Union's standards and rules.

Manufacturer : **DONGBU DAEWOO ELECTRONICS CORPORATION**
Daechi-Dong, Dongbu Financial Center 432, Teheran-ro, Gangnam-gu, Seoul, Korea

Importer : **DONGBU DAEWOO ELECTRONICS UK LIMITED**
640 Wharfedale road, Winnersh triange , Wokingham , Berkshire, RG41 5TP UK